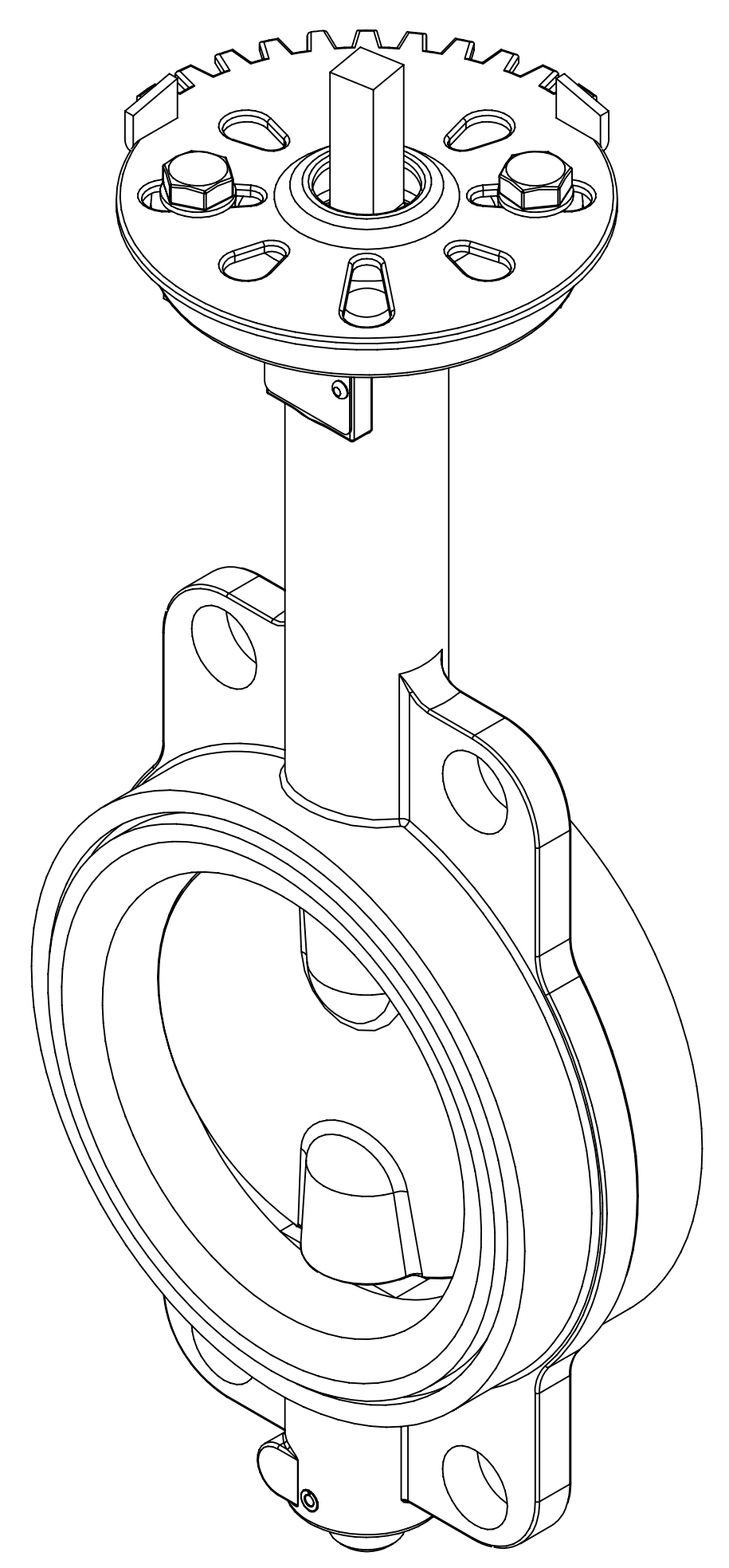
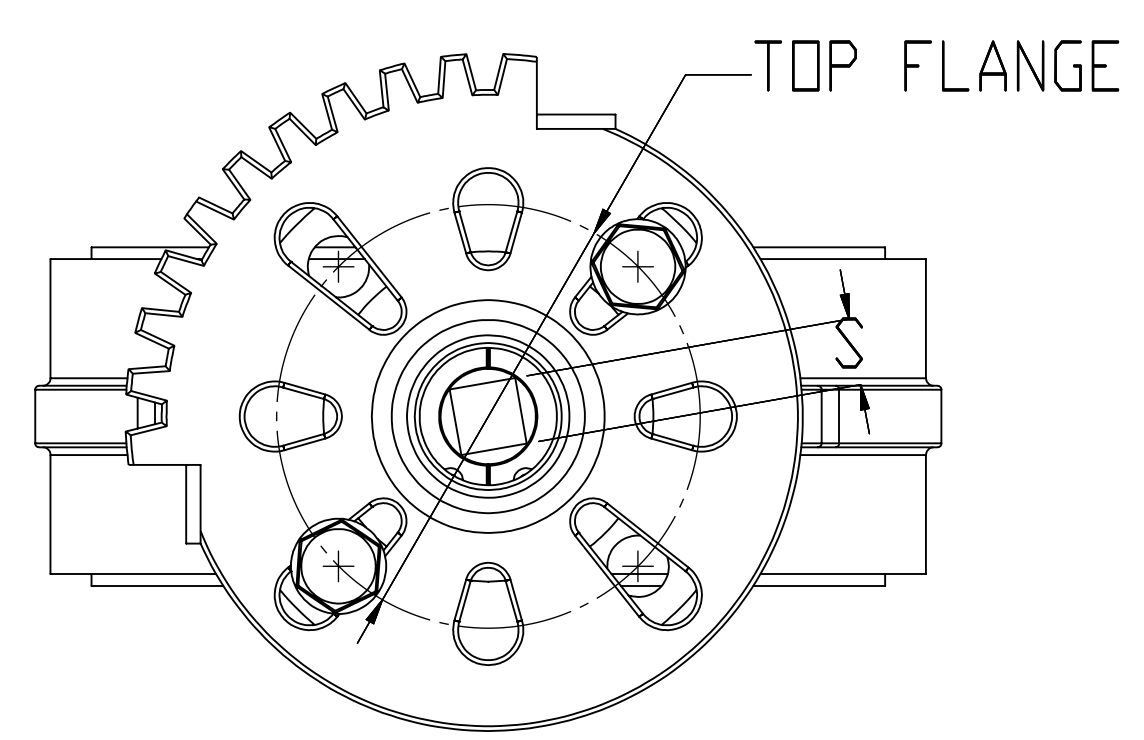
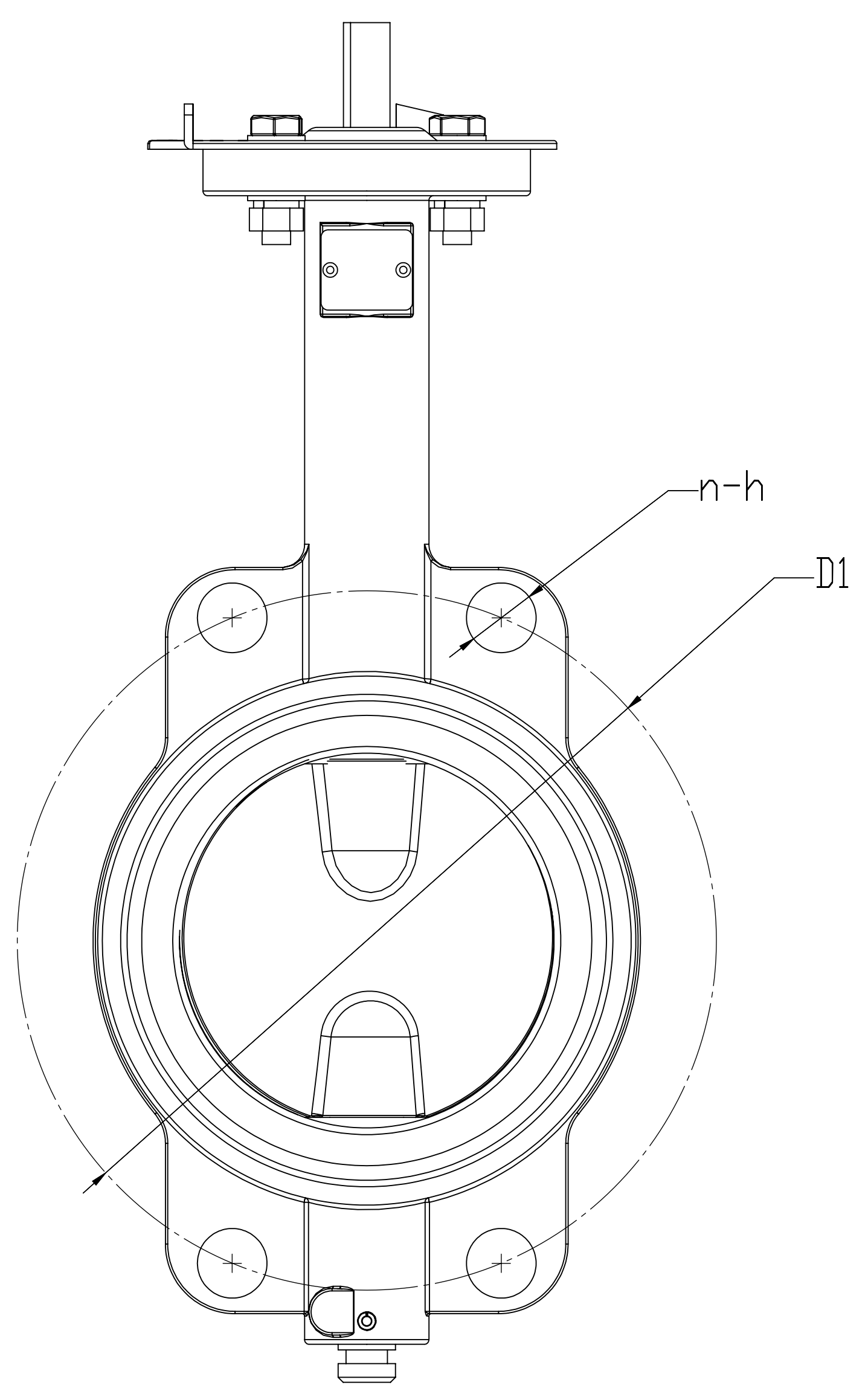
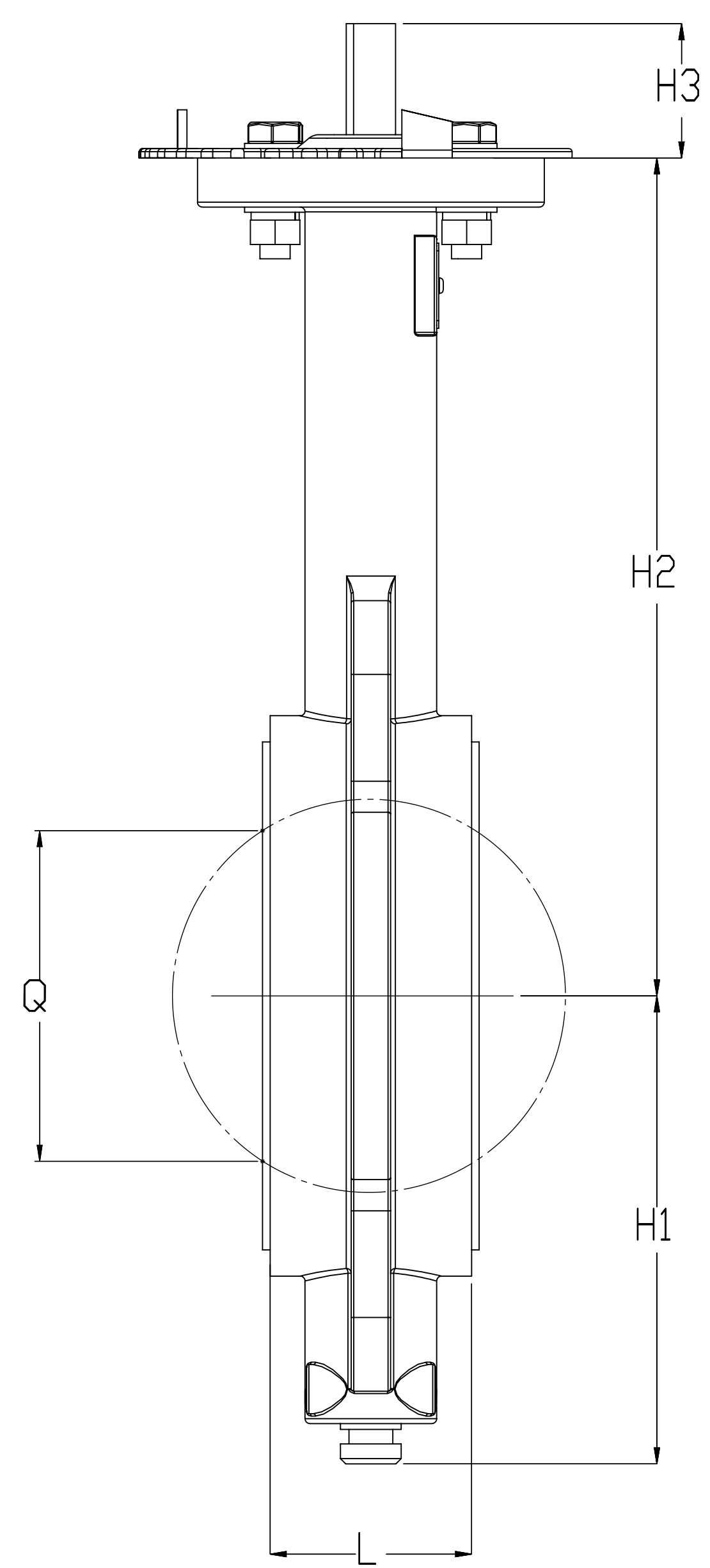



REVISIONS			
REV.	DESCRIPTION	DATE	APPROVED
1	Stem Dimensions Update	August 16, 2009	JE



STANDARDS:
 1. Valves designed to API-609, MSS-SP-67, MSS-SP-25
 2. Install between standard ANSI Class 125/150 Flanges
 3. Top works designed to ISO 5211

TECHNICAL SPECIFICATIONS	
NOMINAL SIZE (INCHES)	2" THRU 12"
NOMINAL PRESSURE	150 PSI
BODY TEST PRESSURE	220 PSI
SEALING TEST PRESSURE	160 PSI
APPLICATION TEMP	EPDM - 250 DEGREES F
	EPDM/PTFE - 250 DEGREES F
BODY MATERIAL	SS 316
DISC MATERIAL	(VARIOUS (SS, DI/PTFE, SS/PTFE)
SHAFT MATERIAL	SS 316
	DELTA T 2" - 12" 650 Series Valve Standard Wafer Pattern
	DRAWING-NO: DT-09-02-0001
	SIZE: ANSI D

SIZE	L	Q	n-h (in)	D1	H1	H2	H3	S (mm)	TOP FLANGE
2"	1.66	1.03	4 x 0.75	4.75	2.56	5.75	1.26	9	F05
2-1/2"	1.76	1.71	4 x 0.75	5.50	3.15	5.94	1.30	9	F05
3"	1.78	2.46	4 x 0.75	6.00	3.62	6.89	1.30	11	F05
4"	2.05	3.56	4 x 0.75	7.50	3.74	7.13	1.30	11	F07
5"	2.14	4.35	4 x 0.89	8.50	4.49	7.87	1.30	14	F07
6"	2.20	5.81	4 x 0.89	9.50	5.00	8.39	1.30	14	F07
8"	2.39	7.66	4 x 0.89	11.75	5.47	8.90	1.30	17	F10
10"	2.58	9.54	4 x 1.00	14.25	6.89	10.24	1.85	22	F10
12"	3.03	11.69	4 x 1.00	17.00	8.00	11.50	1.85	22	F10