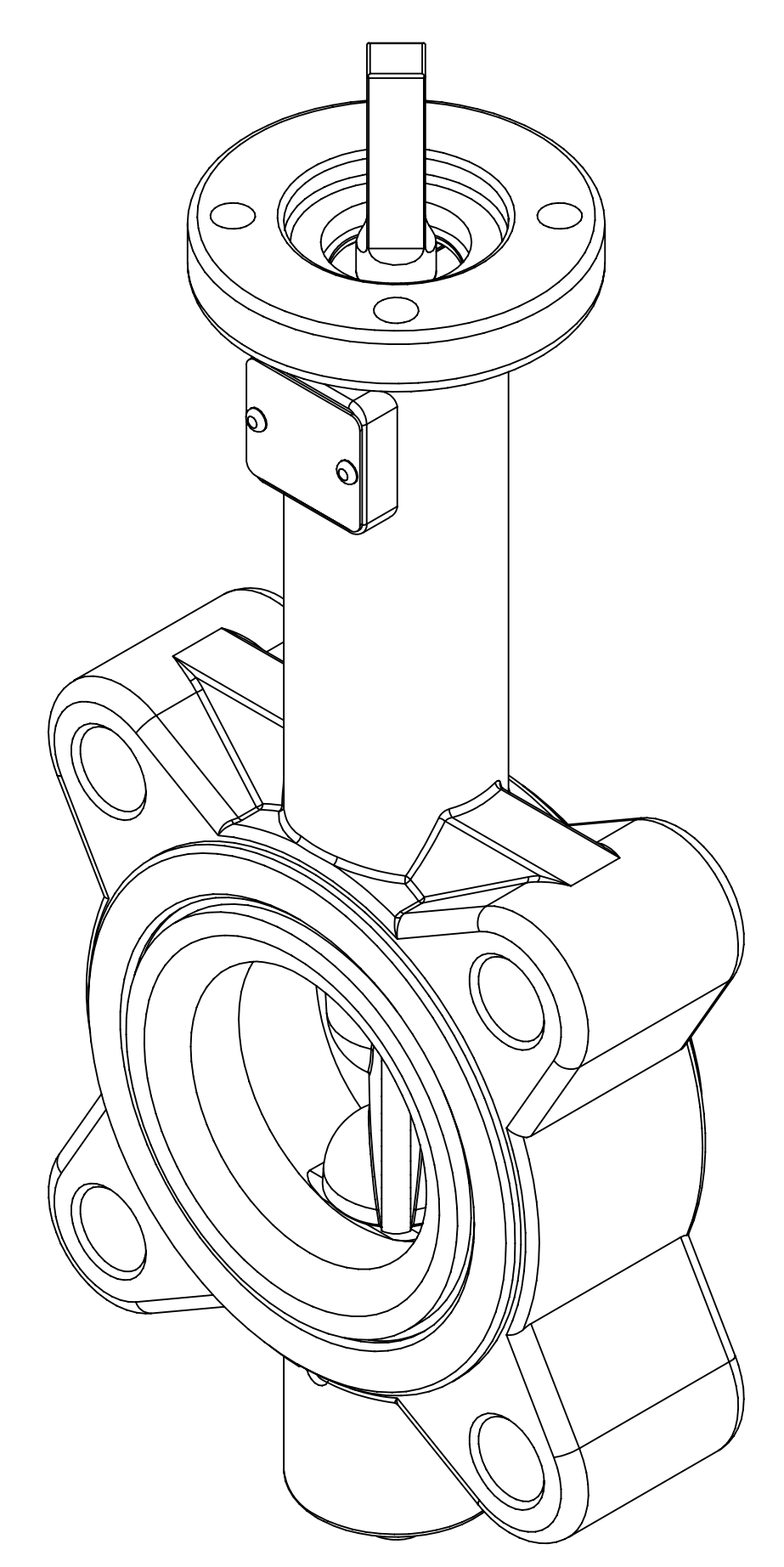
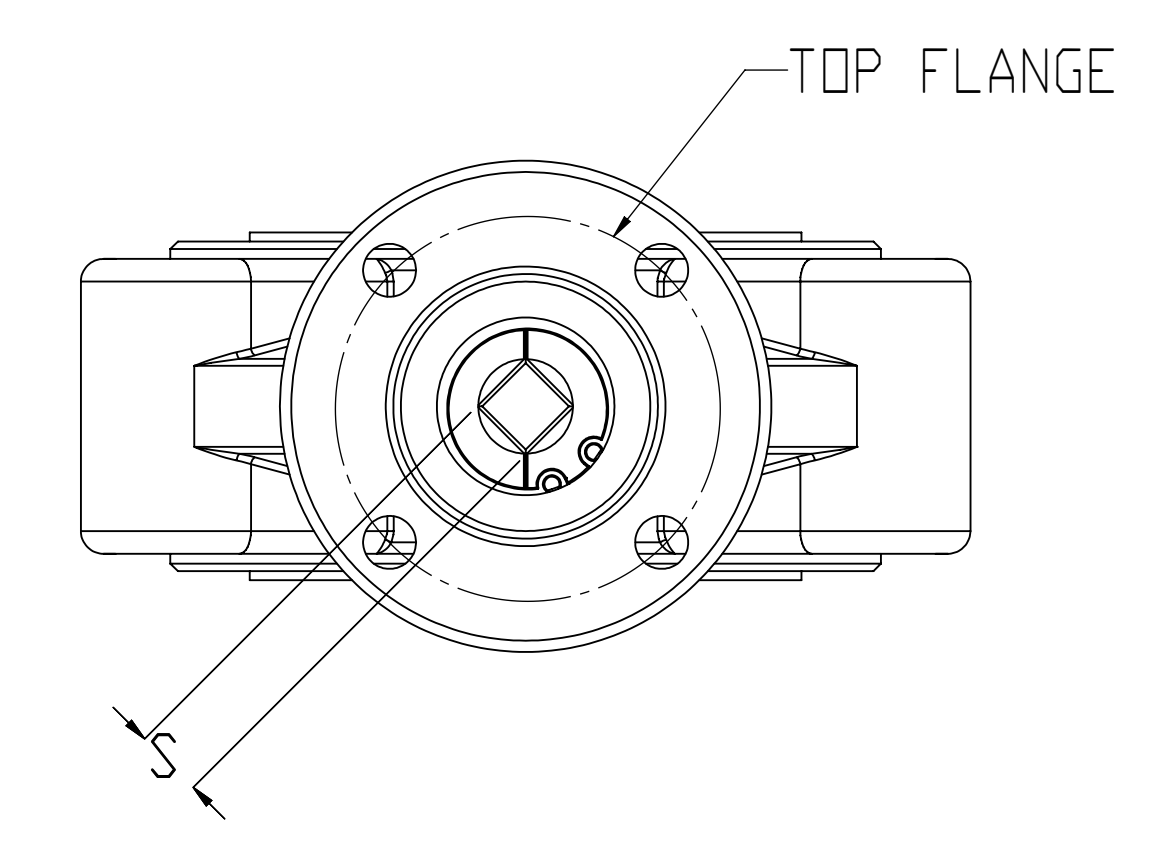
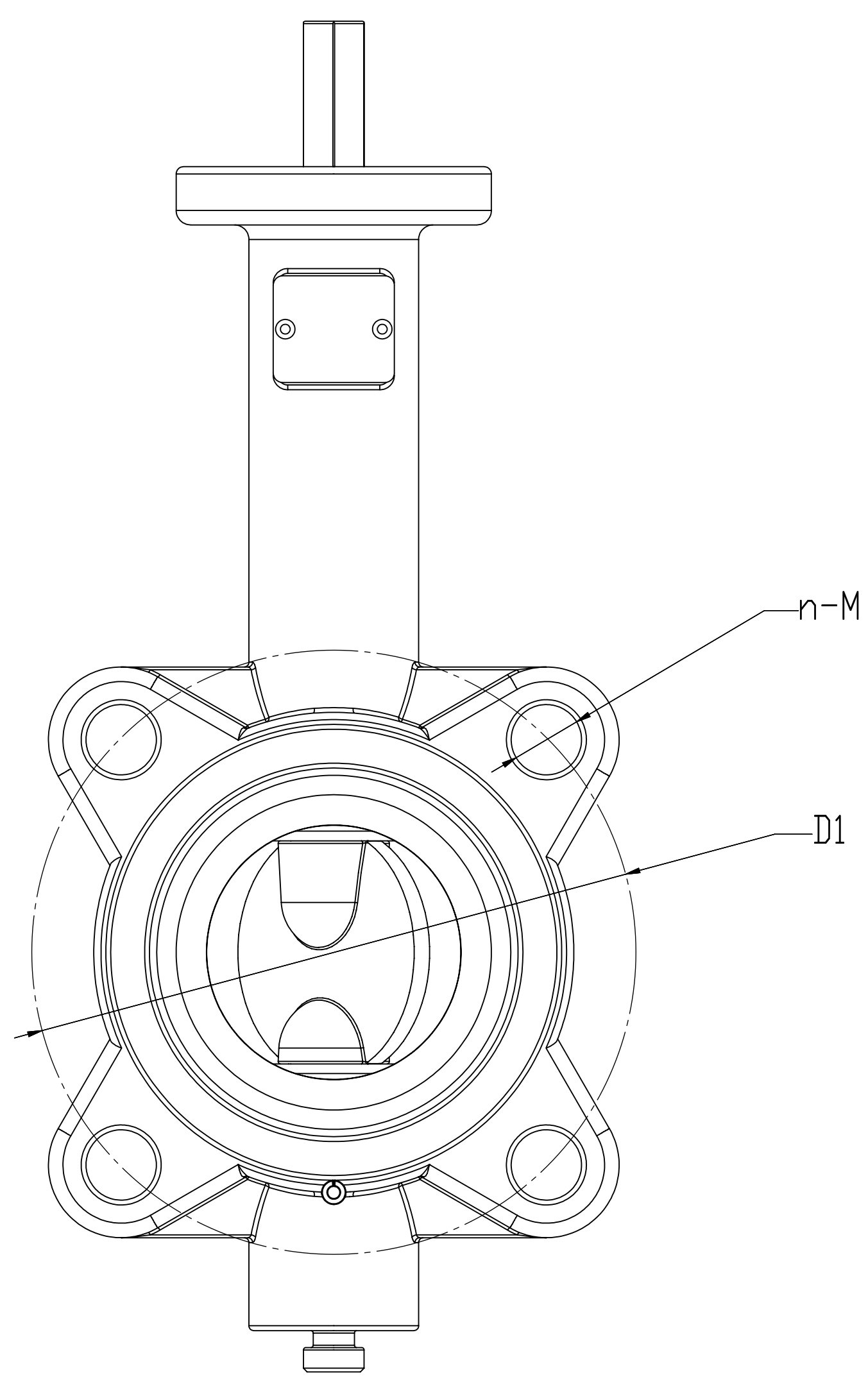
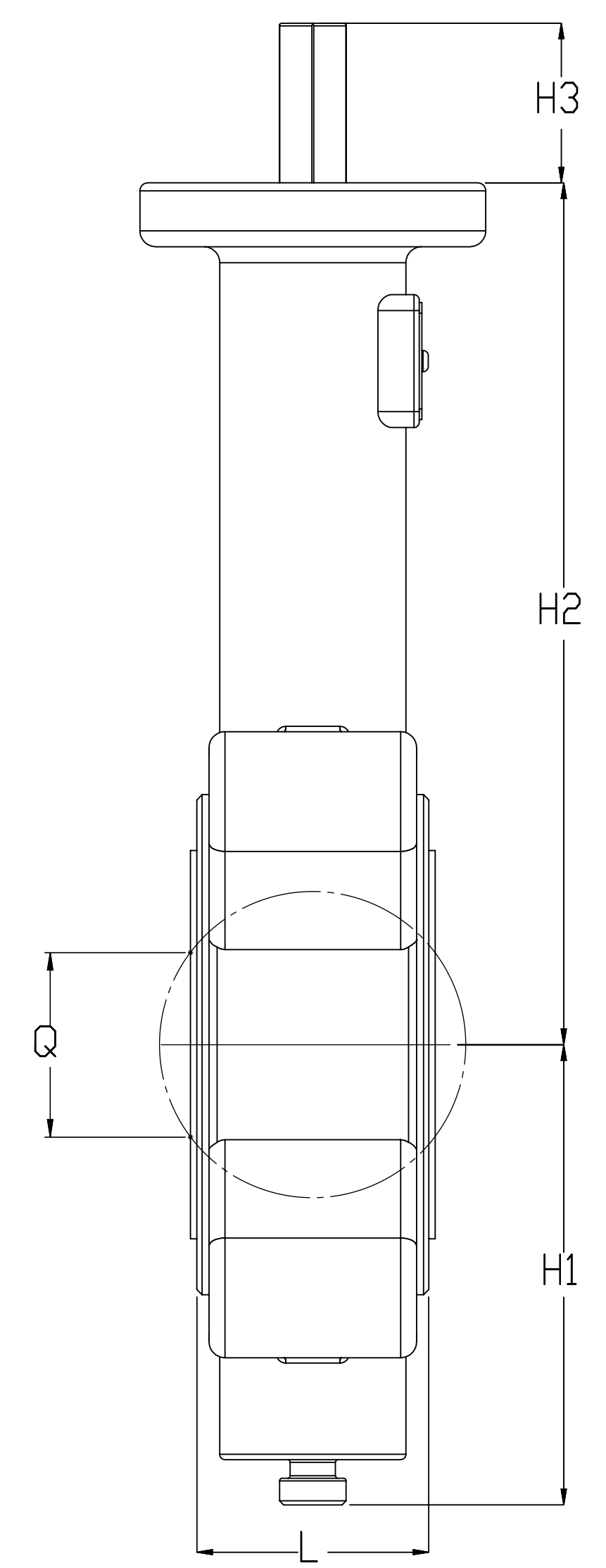



REVISIONS			
REV.	DESCRIPTION	DATE	APPROVED
-	-	-	-



STANDARDS:
 1. Valves designed to API-609, MSS-SP-67, MSS-SP-25
 2. Install between standard ANSI Class 125/150 Flanges
 3. Top works designed to ISO 5211

TECHNICAL SPECIFICATIONS	
NOMINAL SIZE (INCHES)	2" THRU 12"
NOMINAL PRESSURE	150 PSI
BODY TEST PRESSURE	220 PSI
SEALING TEST PRESSURE	160 PSI
APPLICATION TEMP	EPDM - 250 DEGREES F EPDM/PTFE - 250 DEGREES F
BODY MATERIAL	SS 316
DISC MATERIAL	(VARIOUS (SS, DI/PTFE, SS/PTFE))
SHAFT MATERIAL	SS 316
	DELTA T 2" - 12" 651 Series Valve Standard Lug Pattern
	DRAWING-NO: DT-09-02-0002
	SIZE: ANSI D

SIZE	L	Q	n-M	D1	H1	H2	H3	S (mm)	TOP FLANGE
2"	1.66	1.03	4 x 5/8-11 UNC	4.75	3.15	6.34	1.26	9	F05
2-1/2"	1.76	1.71	4 x 5/8-11 UNC	5.50	3.50	6.89	1.26	9	F05
3"	1.78	2.46	4 x 5/8-11 UNC	6.00	3.74	7.13	1.26	11	F05
4"	2.05	3.56	8 x 5/8-11 UNC	7.50	4.50	7.87	1.26	11	F07
5"	2.14	4.35	8 x 3/4-10 UNC	8.50	5.00	8.39	1.26	14	F07
6"	2.20	5.81	8 x 3/4-10 UNC	9.50	5.50	8.90	1.26	14	F07
8"	2.39	7.66	8 x 3/4-10 UNC	11.75	6.90	11.50	1.58	17	F10
10"	2.58	9.54	12 x 7/8-9 UNC	14.25	8.00	13.30	1.58	22	F10
12"	3.03	11.69	12 x 7/8-9 UNC	17.00	9.53	14.50	1.58	22	F10