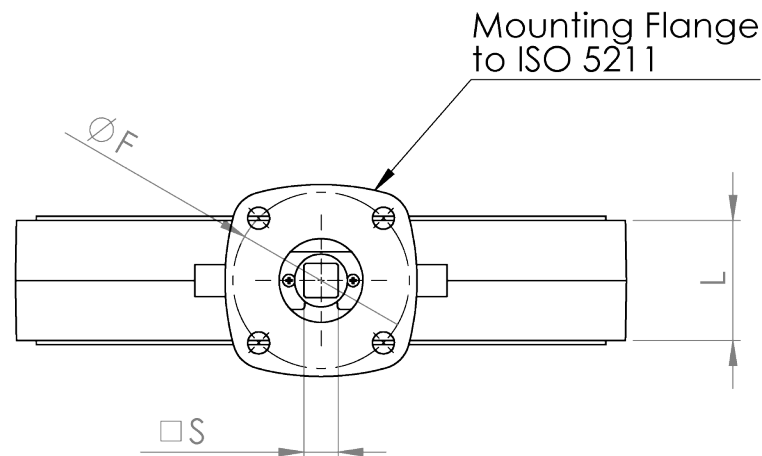


Standards:
 -Valves designed to API-609, MSS-SP-67, SM-SP-25
 -Install between standard ANSI Class 125/150 Flanges



Valve Size	L	D1	D2	H1	H2	H3	S (mm)	F(mm)	ISO
14"	3.07	18.75	17.32	10.31	12.99	1.65	22	102	F10
16"	4.02	21.25	19.09	11.77	14.17	2.01	27	140	F14
18"	4.49	22.75	21.26	12.80	15.55	2.01	27	140	F14
20"	5.00	25.00	23.23	14.17	17.32	2.52	27	165	F16
24"	6.06	29.50	28.15	16.54	19.69	2.76	36	165	F16

TECHNICAL SPECIFICATIONS		UNLESS OTHERWISE SPECIFIED: DIMENSIONS ARE IN INCHES SURFACE FINISH: TOLERANCES: LINEAR: ANGULAR:				FINISH:		DEBUR AND BREAK SHARP EDGES	
Nominal Size (in)	14" thru 24"	DRAWN	NAME	SIGNATURE	DATE	REV	DATE	DESCRIPTION	
Nominal Pressure	150 psi		SE		1/8/2014				
Body Test Pressure	225 psi		CHK'D						
Sealing Test Pressure	110% Rated Pressure		APPV'D						
Application Temp.	EPDM < 250°F BUNA < 220°F		MFG						
Body Material	Cast or Ductile Iron	Q.A					MATERIAL:		
Disc Material	Various (NP-DI, AB, SS, NY11)						DWG NO.		
Shaft Material	SS416 to ASTM A582						050 Series 14-40in		
REVISION 0		DO NOT SCALE DRAWING		WEIGHT:		SCALE:1:6		SHEET 1 OF 1	



TITLE:
**050 Series 14-24" Wafer
 Butterfly Valves**

DWG NO.
050 Series 14-40in

8.5x11"