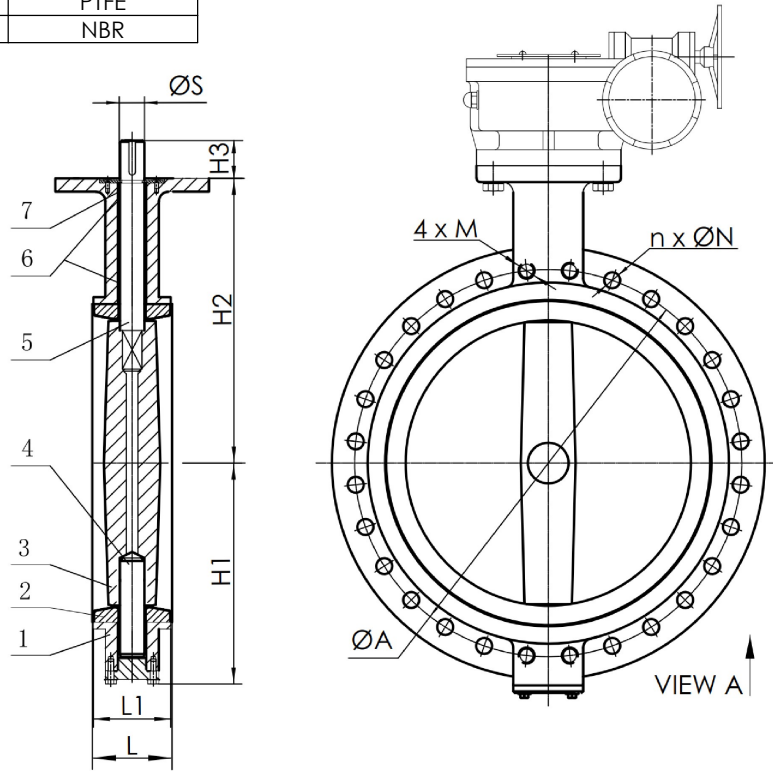
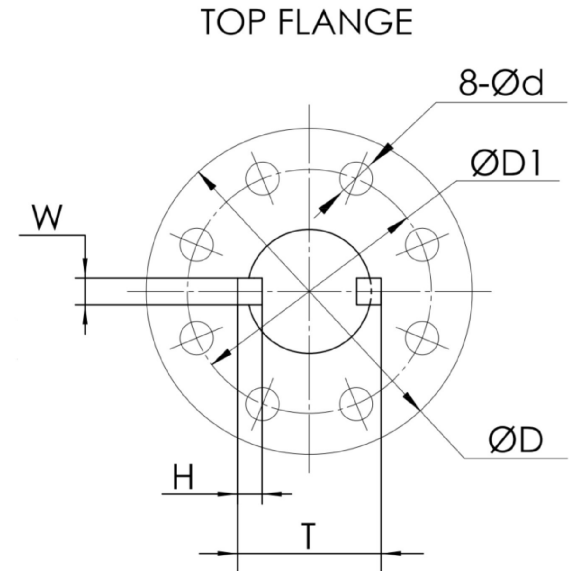


ITEM	DESCRIPTION	MATERIAL
1	BODY	DI
2	SEAT	EPDM/NBR
3	DISC	SS316/DI/AL-BZ
4	LOWER STEM	17-4 PH
5	UPPER STEM	17-4 PH
6	BUSHING	PTFE
7	O-RING	NBR

DIMENSIONS IN INCHES



PRESSURE RATING	150PSI	
HYDROSTATIC TEST PRESSURE	SHELL	SEAT
	225 PSI	165 PSI
STANDARDS	DESIGN CODE	API 609
	INSPECTION & TEST	API 598
	END STANDARD	ANSI B16.1 150#
	FACE TO FACE	API 609



SIZE	H1	H2	H3	L	L1	ØA	M	n X ØN	ØD	ØD1	Ød	ØS	W	H	T
26"	17.7	20.5	2.95	6.50	6.81	31.75	1-1/4"-7 UNC	20 x 1.38	11.81	10.00	0.71	2.13	0.63	0.39	2.44
28"	20.5	24.6	2.95	6.50	6.65	34.00	1-1/4"-7 UNC	24 x 1.38	11.81	10.00	0.71	2.49	0.71	0.43	2.81
30"	22.0	25.6	2.95	6.57	6.81	36.00	1-1/4"-7 UNC	24 x 1.38	11.81	10.00	0.71	2.49	0.71	0.43	2.81
32"	23.4	26.5	3.35	7.48	7.68	38.50	1-1/2"-6 UNC	24 x 1.38	11.81	10.00	0.71	2.49	0.71	0.43	2.81
36"	25.4	28.9	3.35	7.99	8.31	42.75	1-1/2"-6 UNC	28 x 1.61	11.81	10.00	0.71	2.95	0.79	0.47	3.31
40"	28.3	31.5	5.51	8.50	9.02	47.25	1-1/2"-6 UNC	32 x 1.61	11.81	10.00	0.71	3.35	0.87	0.55	3.74
42"	30.6	33.8	5.91	9.88	10.28	49.50	1-1/2"-6 UNC	32 x 1.61	11.81	10.00	0.71	3.74	0.98	0.55	4.13
48"	34.0	37.0	5.91	10.87	11.26	56.00	1-1/2"-6 UNC	40 x 1.61	13.78	11.73	0.87	4.13	1.10	0.63	4.61

	NAME	DATE
DRAWN	EMK	8-21-24
CHECKED		
ENG APPR.	SJE	8-21-24
MFG APPR.		

PROPRIETARY AND CONFIDENTIAL
 THE INFORMATION CONTAINED IN THIS DRAWING IS THE SOLE PROPERTY OF MAX-AIR TECHNOLOGY, INC. ANY REPRODUCTION IN PART OR AS A WHOLE WITHOUT THE WRITTEN PERMISSION OF MAX-AIR TECHNOLOGY, INC. IS PROHIBITED.



DELTA
 A Brand of Max-Air Technology.
 Max-Air Technology, Inc.
 114 Resource Dr.
 Wentzville, MO 63385
 (888) 842-9998
 www.maxairtech.com

TITLE: 26"-48" 050 SERIES BFV
 WAFER DI BODY
 MAX 150 PSI RATING

SIZE	DWG. NO.	REV
B	050-260_480-XXX	1
SCALE: 1:1	WEIGHT:	SHEET 1 / 1