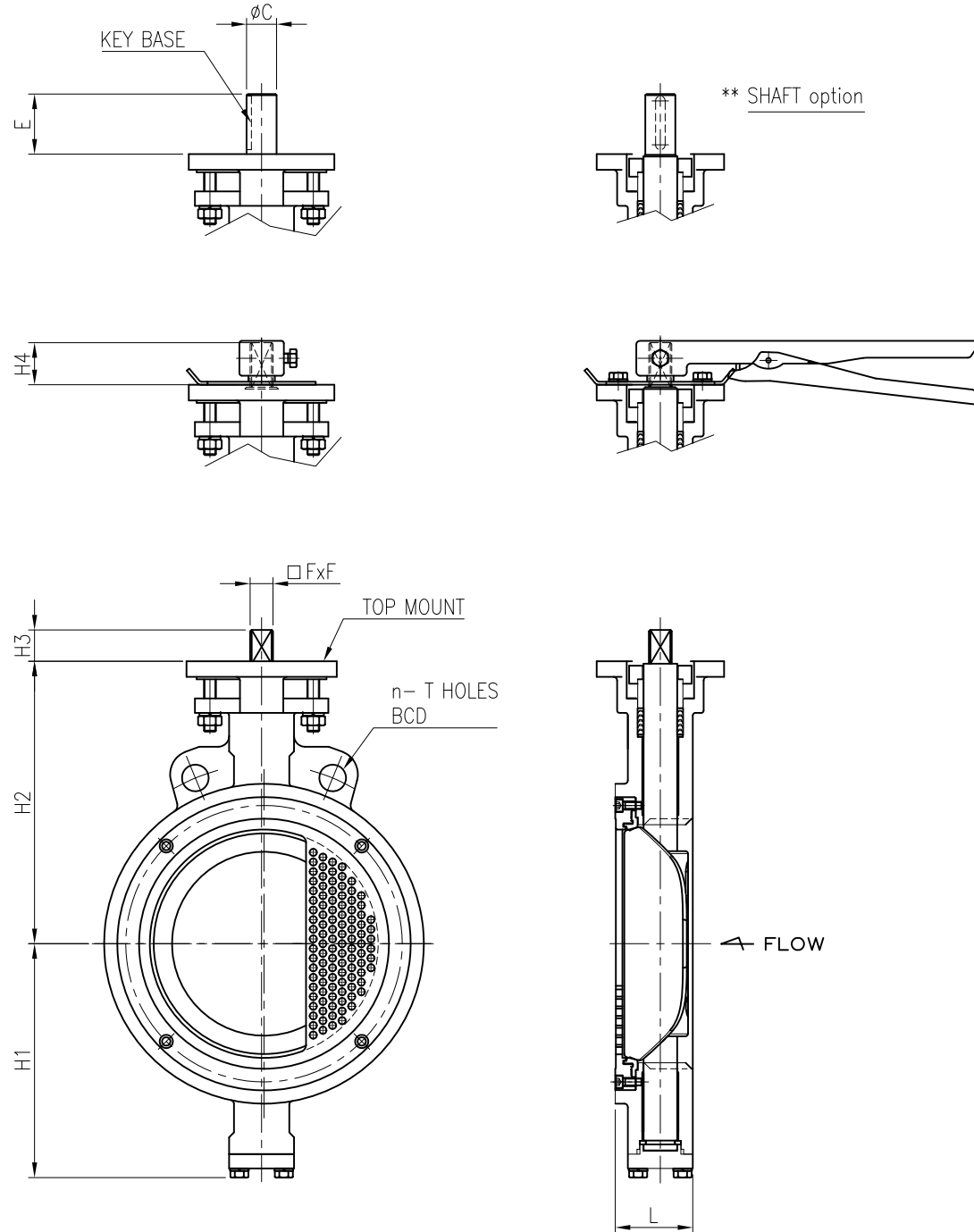




No.	Part	Soft Seated		Metal Seated		Fire Safe	
		Carbon steel	Stainless steel	Carbon steel	Stainless steel	Carbon steel	Stainless steel
01	BODY	WCB	CF8M	WCB	CF8M	WCB	CF8M
02	DISC	CF8M		CF8M+HCR		CF8M	
03	STEM	17-4PH		17-4PH		17-4PH	
04	SEAT	RTFE		SS316		RTFE+SS316	
05	SEAT RETAINER	1020	SS316	1020	SS316	1020	SS316
06	PACKING	PTFE(V-PACKING)		GRAPHITE		GRAPHITE	
07	BUSH(BEARING)	SS304+Teflon	SS316+Teflon	SS304+HCR	SS316+HCR	SS304+HCR	SS316+HCR
08	GLAND BRIDGE	SS304		SS304		SS304	
09	GLAND RING	SS304+HCR		SS304+HCR		SS304+HCR	



C50- Dimension / ASME B16.5 Class150 / Wafer type [unit : mm]

Size	L	n	BCD	T	H1	H2	H3 (STD. Stem)	H4 (Long Stem)	FxF	E	C	KEY BASE	TOP MOUNT
2"	43	4	ø120.7	ø19.1	96	125	13	35	11x11				ISO 5211-F07
2.5"	46	4	ø139.7	ø19.1	102	149	13	35	11x11				ISO 5211-F07
3"	48	4	ø152.4	ø19.1	117	160	13	35	11x11	40	ø16	5x5	ISO 5211-F07
4"	54	8	ø190.5	ø19.1	128	178	18	35	14x14	42	ø19	6x6	ISO 5211-F07
5"	57	8	ø215.9	ø22.2	146	193	18	35	14x14	42	ø19	6x6	ISO 5211-F07
6"	57	8	ø241.3	ø22.2	156	205	22	35	14x14	42	ø19	6x6	ISO 5211-F10
8"	64	8	ø298.5	ø22.2	195	235	26	35	19x19	52	ø26	8X7	ISO 5211-F10
10"	71	12	ø362.0	ø25.4	220	280	32	35	22x22	60	ø30	10x8	ISO 5211-F12
12"	81	2	ø431.8	ø25.4	265	310	35		27x27	65	ø30	10x8	ISO 5211-F12

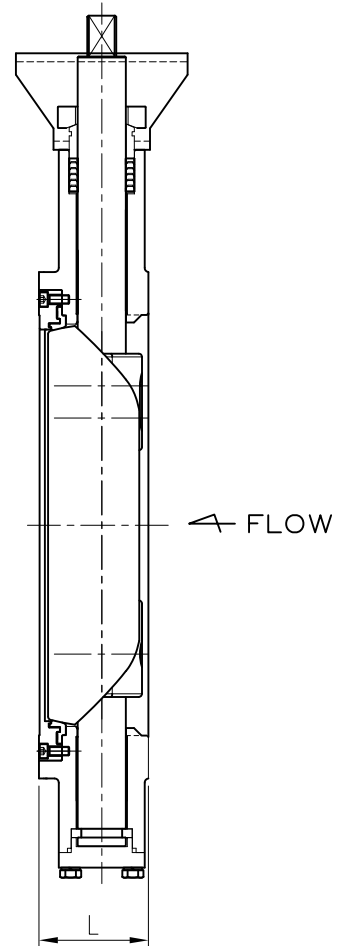
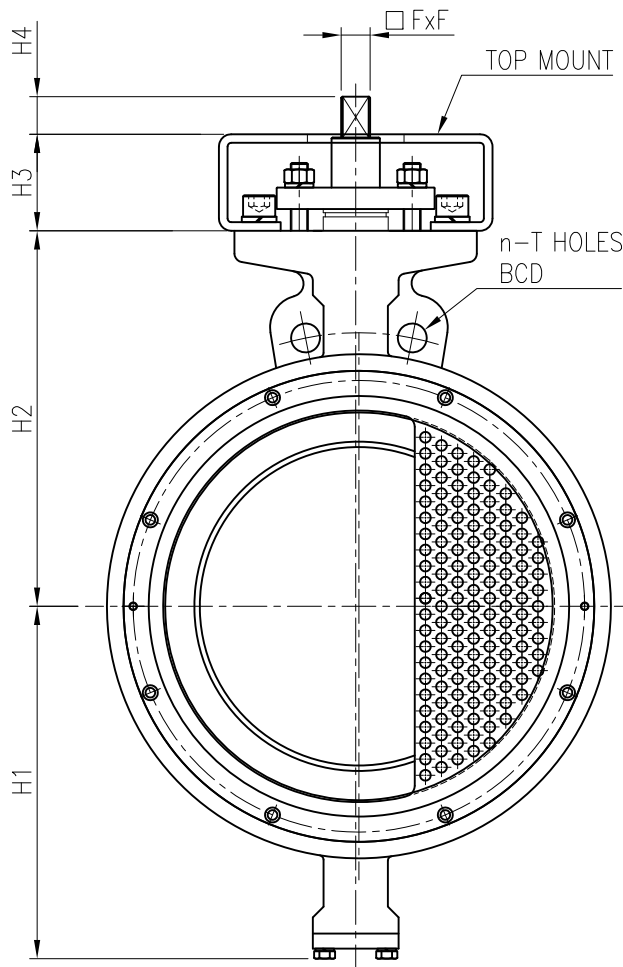
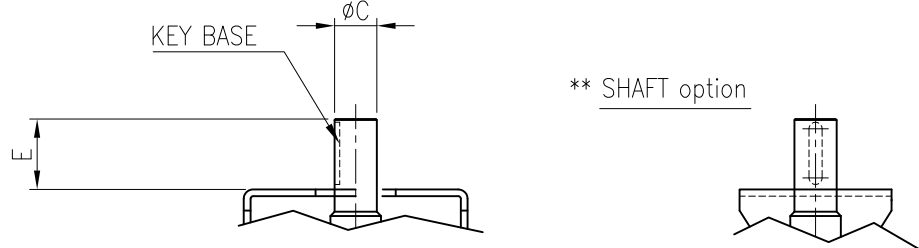
NOTES

- DESIGN STD. : API 609
- Mating FLANGE : ASME B16.5 CLASS150

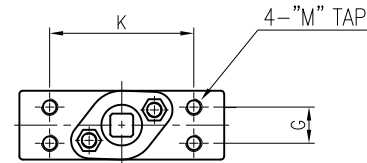
					DESCRIPTION	DWG. No.	C50- 2- 12- 15WB- 010	SCALE	N/A
					H/P BUTTERFLY VALVE 2" TO 12" C50 WAFER CLASS 150 CONTROL	TEST PRESSURE	HYDROSTATIC	SHELL	SEAT
								kgf/cm ²	kgf/cm ²
								AIR	kgf/cm ²
Rev. No.	DATE	DESCRIPTION	DRN.	APP.					
0	21.11.30	FOR REFERENCE	DJ,LEE	JH,YU					



No.	Part	Soft Seated		Metal Seated		Fire Safe	
		Carbon steel	Stainless steel	Carbon steel	Stainless steel	Carbon steel	Stainless steel
01	BODY	WCB	CF8M	WCB	CF8M	WCB	CF8M
02	DISC	CF8M		CF8M+HCR		CF8M	
03	STEM	17-4PH		17-4PH		17-4PH	
04	SEAT	RTFE		SS316		RTFE+SS316	
05	SEAT RETAINER	1020	SS316	1020	SS316	1020	SS316
06	PACKING	PTFE(V-PACKING)		GRAPHITE		GRAPHITE	
07	BUSH(BEARING)	SS304+Teflon	SS316+Teflon	SS304+HCR	SS316+HCR	SS304+HCR	SS316+HCR
08	GLAND BRIDGE	SS304		SS304		SS304	
09	GLAND RING	SS304+HCR		SS304+HCR		SS304+HCR	
10	BRACKET	Carbon steel		Carbon steel		Carbon steel	



** BARE MOUNT DIMENSION



C50- Dimension / ASME B16.5 Class150 / Wafer type [unit : mm]

Size	L	n	BCD	T	H1	H2	H3	H4	K	G	M	FxF	E	C	KEY BASE	TOP MOUNT
14"	92	2	$\phi 476.3$	$\phi 28.6$	290	315	90	35	151	40	16	27x27	75	$\phi 40$	12x8	ISO 5211-F12,F14
16"	102	2	$\phi 539.8$	$\phi 28.6$	329	350	110	35	180	45	20	27x27	75	$\phi 40$	12x8	ISO 5211-F14,F16

NOTES

- DESIGN STD. : API 609
- Mating FLANGE : ASME B16.5 CLASS150

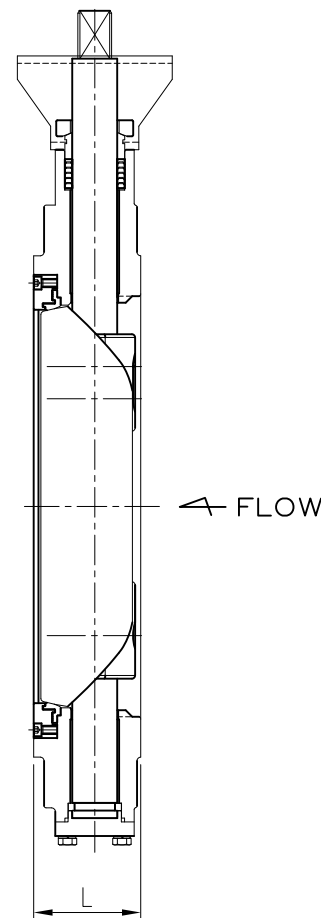
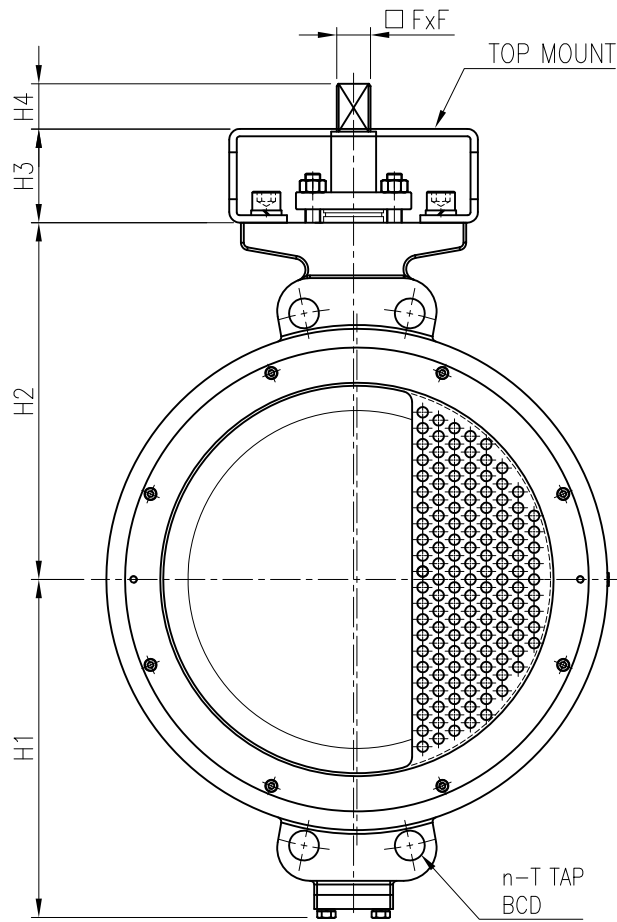
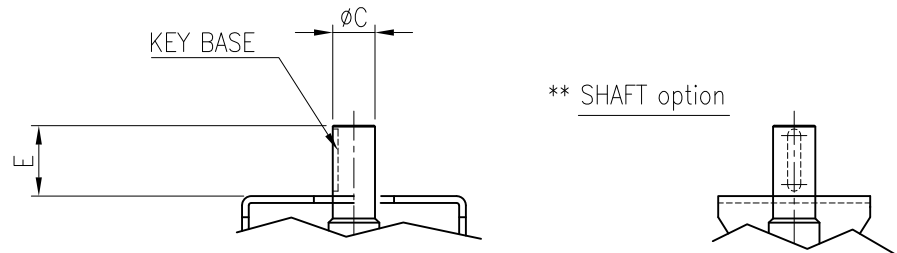
Rev. No.	DATE	DESCRIPTION	DRN.	APP.
0	21.11.30	FOR REFERENCE	DJ,LEE	JH,YU

DESCRIPTION
H/P BUTTERFLY VALVE
14" TO 16" C50 WAFER
CLASS 150 CONTROL

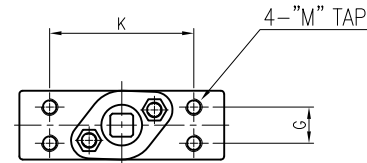
DWG. No.	C50- 14- 16- 15WB- 011	SCALE	N/A
TEST PRESSURE	HYDROSTATIC	SHELL	SEAT
	AIR	kgf/cm ²	kgf/cm ²



No.	Part	Soft Seated		Metal Seated		Fire Safe	
		Carbon steel	Stainless steel	Carbon steel	Stainless steel	Carbon steel	Stainless steel
01	BODY	WCB	CF8M	WCB	CF8M	WCB	CF8M
02	DISC	CF8M		CF8M+HCR		CF8M	
03	STEM	17-4PH		17-4PH		17-4PH	
04	SEAT	RTFE		SS316		RTFE+SS316	
05	SEAT RETAINER	1020	SS316	1020	SS316	1020	SS316
06	PACKING	PTFE(V-PACKING)		GRAPHITE		GRAPHITE	
07	BUSH(BEARING)	SS304+Teflon	SS316+Teflon	SS304+HCR	SS316+HCR	SS304+HCR	SS316+HCR
08	GLAND BRIDGE	SS304		SS304		SS304	
09	GLAND RING	SS304+HCR		SS304+HCR		SS304+HCR	
10	BRACKET	Carbon steel		Carbon steel		Carbon steel	



** BARE MOUNT DIMENSION



C50 - Dimension / ASME B16.5 Class150 / Wafer type

[unit : mm]

Size	L	n	BCD	T	H1	H2	H3	H4	K	G	M	FxF	E	C	KEY BASE	TOP MOUNT
18"	114	4	$\phi 577.9$	$\phi 31.8$	361	380	110	48	186	45	20	36x36	75	$\phi 45$	14x9	ISO 5211-F14,F16
20"	127	4	$\phi 635.0$	1 1/8" 8UN	400	420	120	48	186	46	20	36x36	90	$\phi 55$	16x10	ISO 5211-F14,F16
24"	154	4	$\phi 749.3$	1 1/4" 8UN	469	480	120	50	200	55	20	46x46	100	$\phi 60$	18x11	ISO 5211-F14,F16

NOTES

- DESIGN STD. : API 609
- Mating FLANGE : ASME B16.5 CLASS150

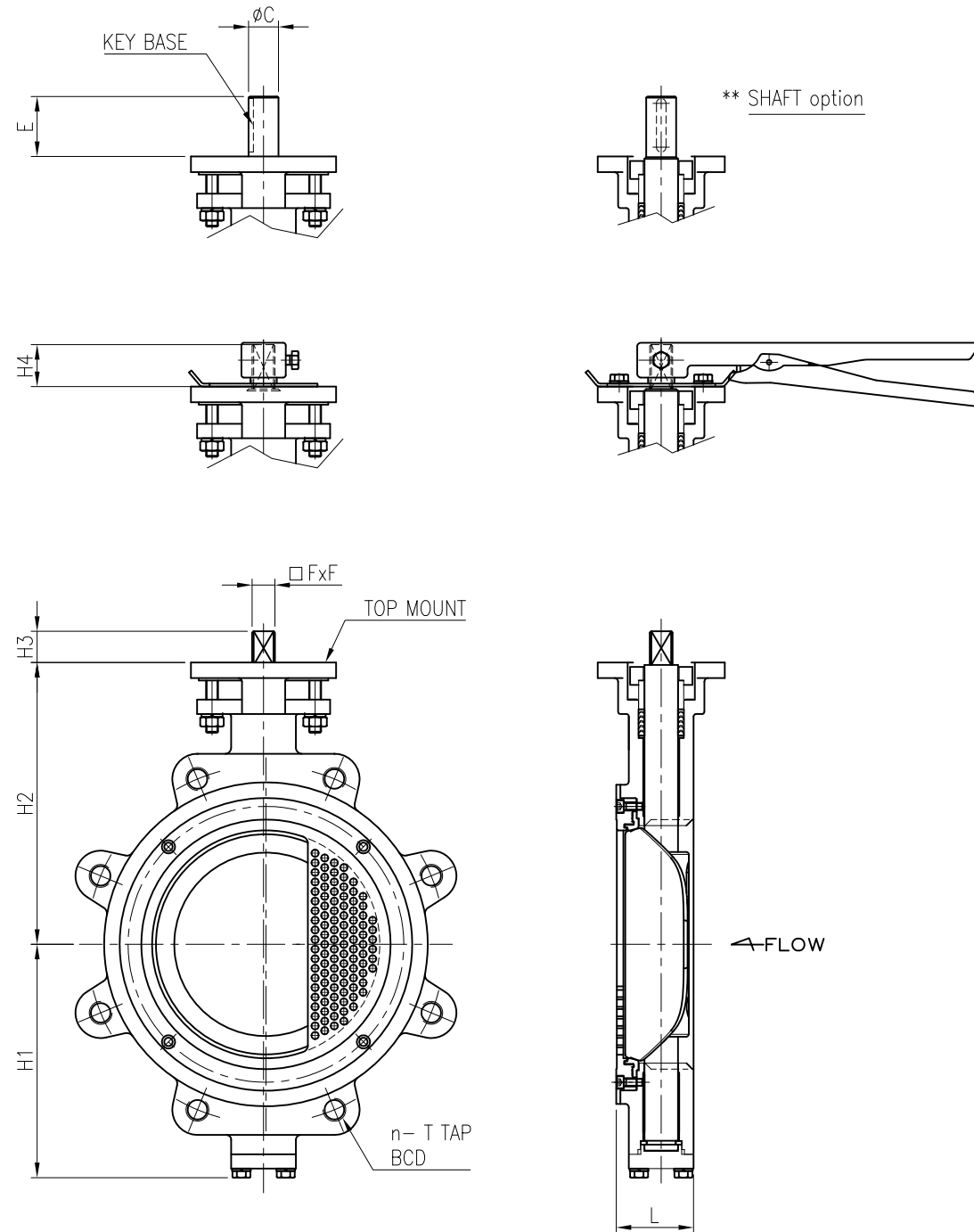
Rev. No.	DATE	DESCRIPTION	DRN.	APP.
0	21.11.30	FOR REFERENCE	DJ,LEE	JH,YU

DESCRIPTION
H/P BUTTERFLY VALVE
18" TO 24" C50 WAFER
CLASS 150 CONTROL

DWG. No.	C50- 18- 24- 15WB- 011	SCALE	N/A
TEST PRESSURE	HYDROSTATIC	SHELL	SEAT
	AIR	kgf/cm ²	kgf/cm ²



No.	Part	Soft Seated		Metal Seated		Fire Safe	
		Carbon steel	Stainless steel	Carbon steel	Stainless steel	Carbon steel	Stainless steel
01	BODY	WCB	CF8M	WCB	CF8M	WCB	CF8M
02	DISC	CF8M		CF8M+HCR		CF8M	
03	STEM	17-4PH		17-4PH		17-4PH	
04	SEAT	RTFE		SS316		RTFE+SS316	
05	SEAT RETAINER	1020	SS316	1020	SS316	1020	SS316
06	PACKING	PTFE(V-PACKING)		GRAPHITE		GRAPHITE	
07	BUSH(BEARING)	SS304+Teflon	SS316+Teflon	SS304+HCR	SS316+HCR	SS304+HCR	SS316+HCR
08	GLAND BRIDGE	SS304		SS304		SS304	
09	GLAND RING	SS304+HCR		SS304+HCR		SS304+HCR	



C51- Dimension / ASME B16.5 Class150 / Lug type [unit : mm]

Size	L	n	BCD	T	H1	H2	H3 (STD. Stem)	H4 (Long Stem)	FxF	E	C	KEY BASE	TOP MOUNT
2"	43	4	ø120.7	5/8" UNC	96	125	13	35	11x11				ISO 5211-F07
2.5"	46	4	ø139.7	5/8" UNC	102	149	13	35	11x11				ISO 5211-F07
3"	48	4	ø152.4	5/8" UNC	117	160	13	35	11x11	40	ø16	5x5	ISO 5211-F07
4"	54	8	ø190.5	5/8" UNC	128	178	18	35	14x14	42	ø19	6x6	ISO 5211-F07
5"	57	8	ø215.9	3/4" UNC	146	193	18	35	14x14	42	ø19	6x6	ISO 5211-F07
6"	57	8	ø241.3	3/4" UNC	156	205	22	35	14x14	42	ø19	6x6	ISO 5211-F10
8"	64	8	ø298.5	3/4" UNC	195	235	26	35	19x19	52	ø26	8x7	ISO 5211-F10
10"	71	12	ø362.0	7/8" UNC	220	280	32	35	22x22	60	ø30	10x8	ISO 5211-F12
12"	81	12	ø431.8	7/8" UNC	265	310	35		27x27	65	ø30	10x8	ISO 5211-F12

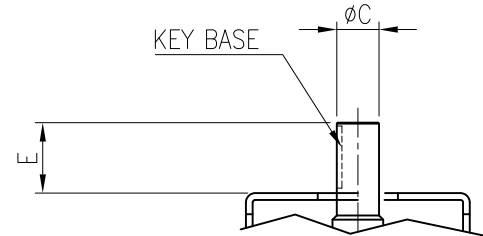
NOTES

- DESIGN STD. : API 609
- Mating FLANGE : ASME B16.5 CLASS150

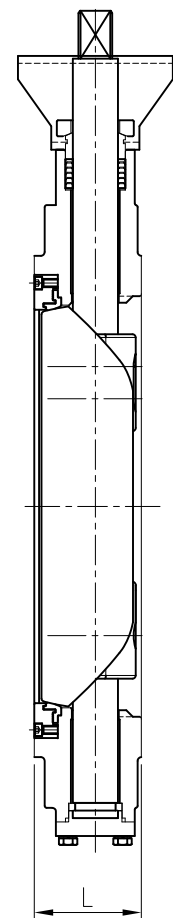
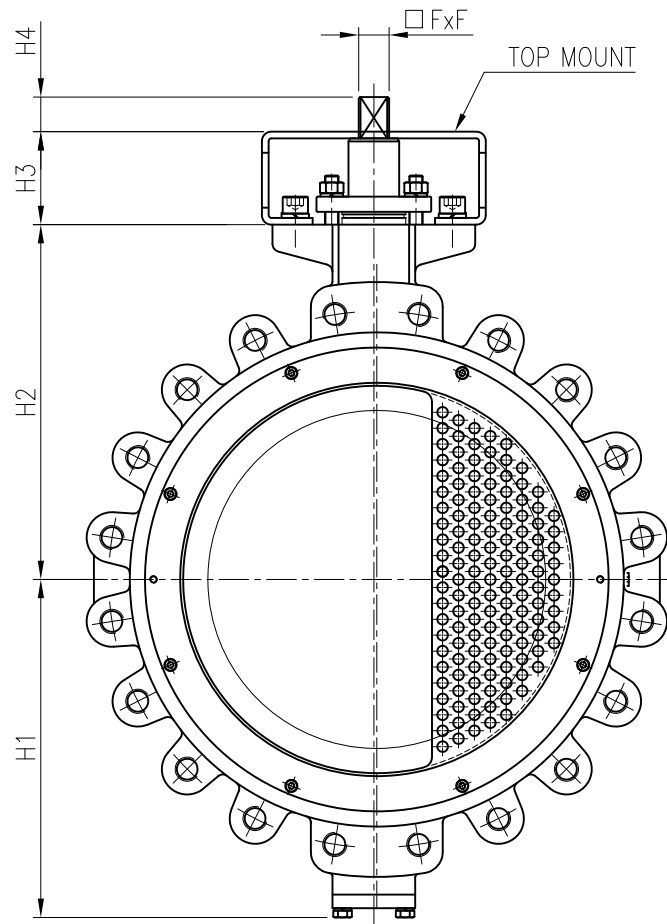
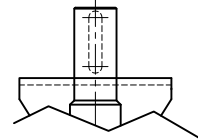
					DESCRIPTION	DWG. No.	C51- 2- 12- 15LB- 010	SCALE	N/A
					H/P BUTTERFLY VALVE	TEST PRESSURE	HYDROSTATIC	SHELL	SEAT
					2" TO 12" C51 LUG			kgf/cm ²	kgf/cm ²
					CLASS 150 CONTROL			AIR	kgf/cm ²
Rev. No.	DATE	DESCRIPTION	DRN.	APP.					
0	21.11.30	FOR REFERENCE	DJ,LEE	JH,YU					



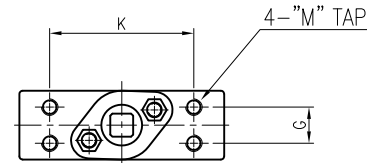
No.	Part	Soft Seated		Metal Seated		Fire Safe	
		Carbon steel	Stainless steel	Carbon steel	Stainless steel	Carbon steel	Stainless steel
01	BODY	WCB	CF8M	WCB	CF8M	WCB	CF8M
02	DISC	CF8M		CF8M+HCR		CF8M	
03	STEM	17-4PH		17-4PH		17-4PH	
04	SEAT	RTFE		SS316		RTFE+SS316	
05	SEAT RETAINER	1020	SS316	1020	SS316	1020	SS316
06	PACKING	PTFE(V-PACKING)		GRAPHITE		GRAPHITE	
07	BUSH(BEARING)	SS304+Teflon	SS316+Teflon	SS304+HCR	SS316+HCR	SS304+HCR	SS316+HCR
08	GLAND BRIDGE	SS304		SS304		SS304	
09	GLAND RING	SS304+HCR		SS304+HCR		SS304+HCR	
10	BRACKET	Carbon steel		Carbon steel		Carbon steel	



** SHAFT option



** BARE MOUNT DIMENSION



C50- Dimension / ASME B16.5 Class150 / Lug type [unit : mm]

Size	L	n	BCD	T	H1	H2	H3	H4	K	G	M	FxF	E	C	KEY BASE	TOP MOUNT
14"	92	12	$\phi 476.3$	1" UNC	290	315	90	35	151	40	16	27x27	75	$\phi 40$	12x8	ISO 5211-F12,F14
16"	102	16	$\phi 539.8$	1" UNC	329	350	110	35	180	45	20	27x27	75	$\phi 40$	12x8	ISO 5211-F14,F16
18"	114	16	$\phi 577.9$	1 1/8" 8UN	361	380	110	48	186	45	20	36x36	75	$\phi 45$	14x9	ISO 5211-F14,F16
20"	127	20	$\phi 635.0$	1 1/8" 8UN	400	420	120	48	186	46	20	36x36	90	$\phi 55$	16x10	ISO 5211-F14,F16
24"	154	20	$\phi 749.3$	1 1/4" 8UN	469	480	120	50	200	55	20	46x46	100	$\phi 60$	18x11	ISO 5211-F14,F16

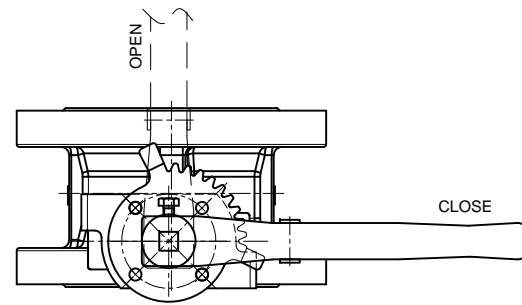
NOTES

- DESIGN STD. : API 609
- Mating FLANGE : ASME B16.5 CLASS150

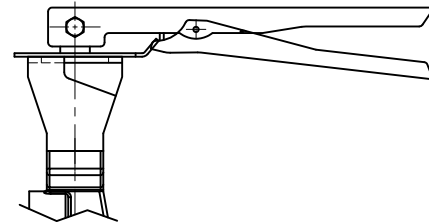
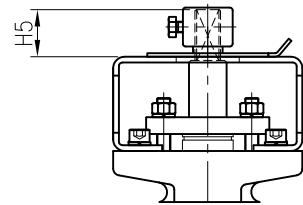
					DESCRIPTION	DWG. No.	C50- 14- 24- 15LB- 011	SCALE	N/A
					H/P BUTTERFLY VALVE	TEST PRESSURE	HYDROSTATIC	SHELL	SEAT
					14" TO 24" C50 LUG			kgf/cm ²	kgf/cm ²
					CLASS 150 CONTROL			AIR	kgf/cm ²
Rev. No.	DATE	DESCRIPTION	DRN.	APP.					
0	21.12.03	FOR REFERENCE	DJ,LEE	JH,YU					



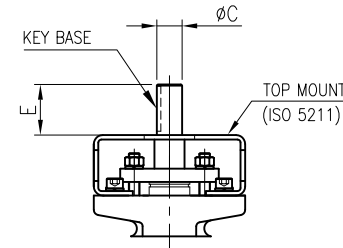
No.	Part	Soft Seated		Metal Seated		Fire Safe	
		Carbon steel	Stainless steel	Carbon steel	Stainless steel	Carbon steel	Stainless steel
01	BODY	WCB	CF8M	WCB	CF8M	WCB	CF8M
02	DISC	CF8M		CF8M+HCR		CF8M	
03	STEM	17-4PH		17-4PH		17-4PH	
04	SEAT	RTFE		SS316		RTFE+SS316	
05	SEAT RETAINER	1020	SS316	1020	SS316	1020	SS316
06	PACKING	PTFE(V-PACKING)		GRAPHITE		GRAPHITE	
07	BUSH(BEARING)	SS304+Teflon	SS316+Teflon	SS304+HCR	SS316+HCR	SS304+HCR	SS316+HCR
08	GLAND BRIDGE	SS304		SS304		SS304	
09	GLAND RING	SS304+HCR		SS304+HCR		SS304+HCR	



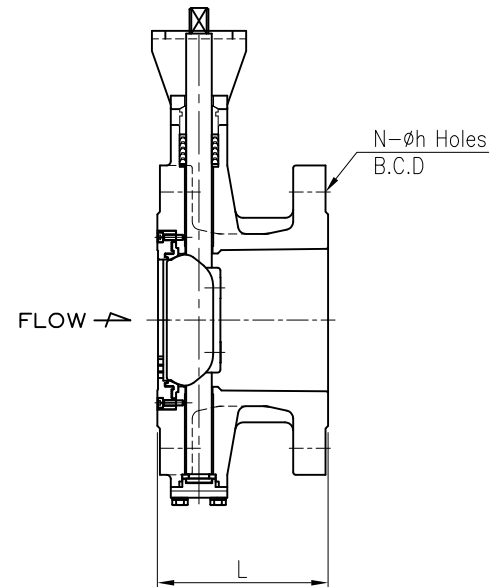
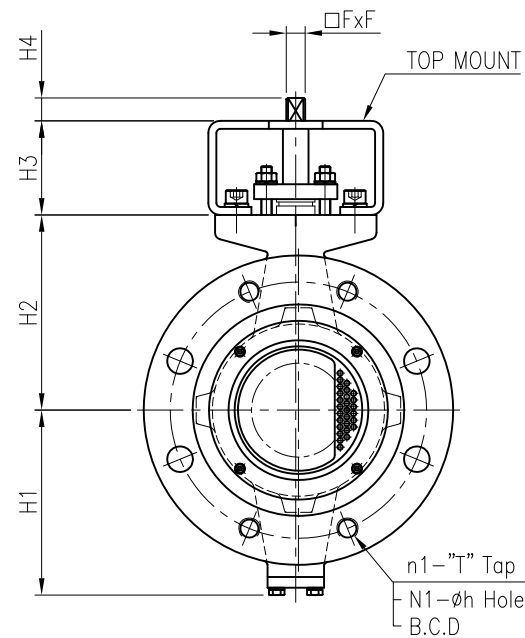
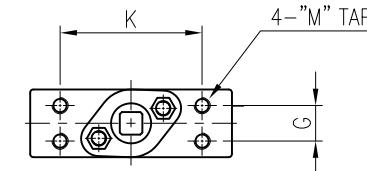
** LEVER option



** SHAFT option



** BARE MOUNT DIMENSION



C53- Dimension / ASME B16.5 Class150 / Flange type [unit : mm]

Size	L	B.C.D	n1	T(Tap)	N	N1	h	H1	H2	H3	H4 (STD. Stem)	H5 (Long Stem)	K	G	M	FxF	E	C	KEY BASE	TOP MOUNT
3"	114	ø152.4	4	5/8"UNC	4	-	ø19.1	117	130	65	13	35	88	22	10	11x11	40	ø16	5x5	ISO 5211-F05,F07
4"	127	ø190.5	4	5/8"UNC	8	4	ø19.1	138	145	70	18	35	88	22	10	14x14	42	ø19	6x6	ISO 5211-F07,F10
5"	140	ø215.9	4	3/4"UNC	8	4	ø22.2	146	165	70	18	35	88	22	10	14x14	42	ø19	6x6	ISO 5211-F07,F10
6"	140	ø241.3	4	3/4"UNC	8	4	ø22.2	156	175	70	22	35	94	24	10	14x14	42	ø19	6x6	ISO 5211-F10,F12
8"	152	ø298.5	4	3/4"UNC	8	4	ø22.2	195	210	75	26	35	104	32	12	19x19	52	ø26	8x7	ISO 5211-F10,F12
10"	165	ø362.0	4	7/8"UNC	12	8	ø25.4	231	250	80	32	35	104	32	12	22x22	60	ø30	10x8	ISO 5211-F12,F14
12"	178	ø431.8	4	7/8"UNC	12	8	ø25.4	265	295	90	35		141	40	16	27x27	65	ø30	10x8	ISO 5211-F12,F14

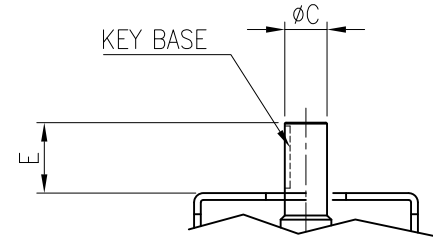
NOTES

- DESIGN STD. : API 609
- Mating FLANGE : ASME B16.5 CLASS150

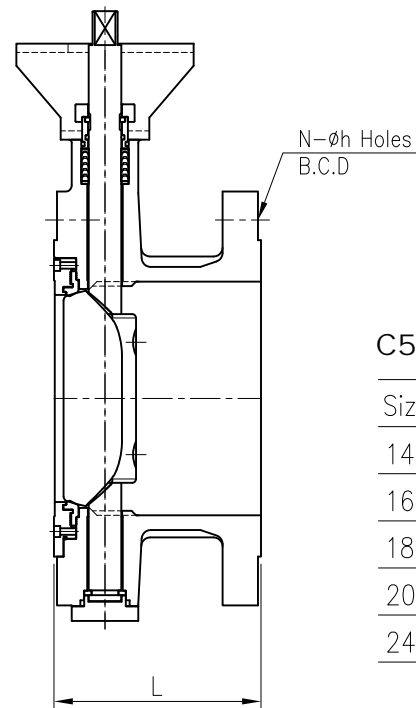
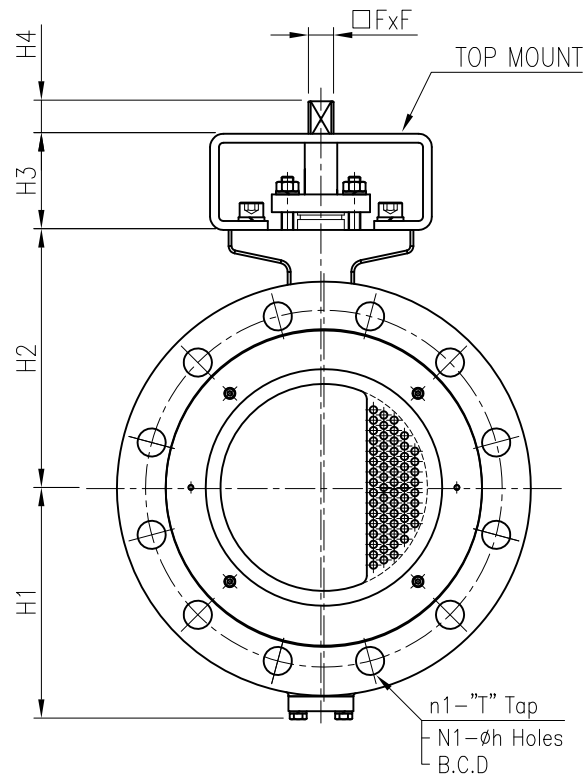
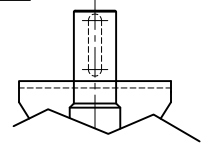
Rev. No.	DATE	DESCRIPTION	DRN.	APP.	DESCRIPTION	DWG. No.	C53- 3- 12- 15FB- 010	SCALE	N/A
0	21.12.03	FOR REFERENCE	DJ,LEE	JH,YU	H/P BUTTERFLY VALVE 3" TO 12" C53 FLANGED CLASS 150 CONTROL	TEST PRESSURE	HYDROSTATIC	SHELL	SEAT
							AIR	kgf/cm ²	kgf/cm ²



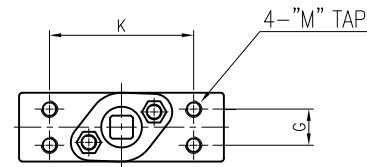
No.	Part	Soft Seated		Metal Seated		Fire Safe	
		Carbon steel	Stainless steel	Carbon steel	Stainless steel	Carbon steel	Stainless steel
01	BODY	WCB	CF8M	WCB	CF8M	WCB	CF8M
02	DISC	CF8M		CF8M+HCR		CF8M	
03	STEM	17-4PH		17-4PH		17-4PH	
04	SEAT	RTFE		SS316		RTFE+SS316	
05	SEAT RETAINER	1020	SS316	1020	SS316	1020	SS316
06	PACKING	PTFE(V-PACKING)		GRAPHITE		GRAPHITE	
07	BUSH(BEARING)	SS304+Teflon	SS316+Teflon	SS304+HCR	SS316+HCR	SS304+HCR	SS316+HCR
08	GLAND BRIDGE	SS304		SS304		SS304	
09	GLAND RING	SS304+HCR		SS304+HCR		SS304+HCR	
10	BRACKET	Carbon steel		Carbon steel		Carbon steel	



** SHAFT option



** BARE MOUNT DIMENSION



C53- Dimension / ASME B16.5 Class150 / Flange type [unit : mm]

Size	L	B.C.D	n1	T(Tap)	N	N1	h	H1	H2	H3	H4	K	G	M	FxF	E	C	KEY BASE	TOP MOUNT
14"	191	ø476.3	4	1"UNC	12	8	ø28.4	290	315	90	35	151	40	16	27x27	75	ø40	12x8	ISO 5211-F12,F14
16"	216	ø539.8	4	1"UNC	16	12	ø28.4	329	350	110	35	180	45	20	27x27	75	ø40	12x8	ISO 5211-F14,F16
18"	222	ø577.9	4	1 1/8" 8UN	16	12	ø31.8	361	380	110	48	186	45	20	36x36	75	ø45	14x9	ISO 5211-F14,F16
20"	229	ø635.0	4	1 1/8" 8UN	20	16	ø31.8	400	420	120	48	186	46	20	36x36	90	ø55	16x10	ISO 5211-F14,F16
24"	267	ø749.3	4	1 1/4" 8UN	20	16	ø35.1	469	480	120	50	200	55	20	46x46	100	ø60	18x11	ISO 5211-F14,F16

NOTES

- DESIGN STD. : API 609
- Mating FLANGE : ASME B16.5 CLASS150

					DESCRIPTION	DWG. No.	C53- 14- 24- 15FB- 011	SCALE	N/A	
					H/P BUTTERFLY VALVE	TEST PRESSURE	HYDROSTATIC	SHELL	SEAT	
					14" TO 24" C53 FLANGED			AIR	kgf/cm ²	kgf/cm ²
					CLASS 150 CONTROL			AIR	kgf/cm ²	kgf/cm ²
Rev. No.	DATE	DESCRIPTION	DRN.	APP.						
0	21.12.03	FOR REFERENCE	DJ,LEE	JH,YU						