



Wafer & Lug Resilient Seated Butterfly Valve

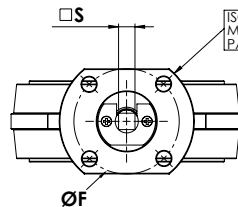


Features

- 050 Wafer Ductile Iron Body sizes 1.5" - 48"
- 051 Lug Ductile Iron Body sizes 1.5" - 48"
- Lug-style dead end service capabilities through 12":
200 PSI uni-directional
100 PSI bi-directional
- Install between Standard ANSI class 125/150 flanges
- 050 Wafer also compatible with PN10/PN16 flanges
- ISO 5211 square drive shaft for easy automation
- Conforms to MSS-SP-67, MSS-SP-25, API-609
- Designed for blowout-proof service
- High-Cv slim disc & 2-piece stem design 1.5"-12"
- Vacuum service capable 1.5"-12" to below 10 microns
- Field repairable

Approvals

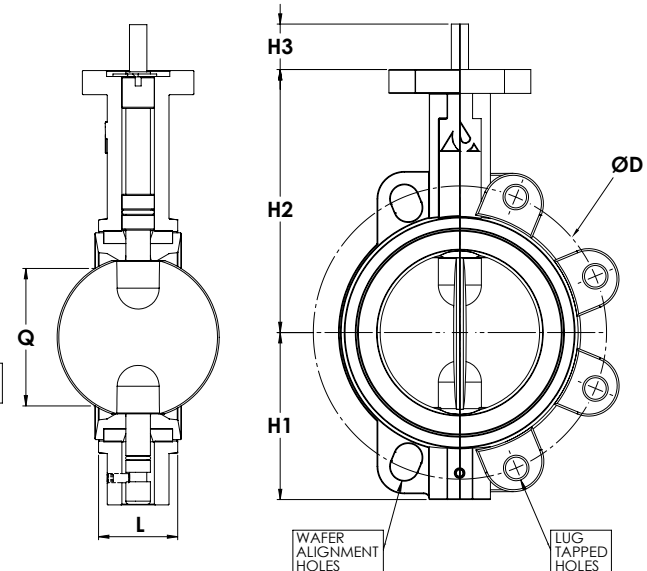
- API 609
- NSF/ANSI 372
- NSF/ANSI 61 (Commercial Hot)



Bill of Materials

#	Description	Materials
1	Body	Ductile Iron ASTM A536
2	Stem Retainer	Carbon Steel, Plated
3	Seat*	EPDM, BUNA, VITON, PTFE/EPDM
4	Stem Retainer Screws	Carbon Steel, Plated
5	Upper Stem	Stainless Steel ASTM A582, Alloy 416, 316SS Option
6	Disc*	DI-NP, AL-BZ, CF8M, NY11, PTFE/CF8M
7	Lower Stem	Stainless Steel ASTM A582, Alloy 416, 316SS Option
8	Lower Stem Retainer	Carbon Steel, Plated
9	Bushing	PTFE/Graphite
10	O-Ring	EPDM, BUNA-N, Fluoroelastomer
11	Nameplate Tag	Aluminum

* Note: Additional Seat/Disc Options Available



Dimensions

Size	L	Q	ØD	Wafer Holes	Lug Taps	H1	H2	H3	ØS	ØF	ISO	Wafer Weight	Lug Weight
in	in	in	in	in	SAE Thread	in	in	in	in	in		lb	lb
1½	1.3	0.8	3.88	4 x 0.7	1/2"-13 UNC	2.5	4.9	1.18	0.354	1.969	F05	4.2	—
2	1.7	1.1	4.75	4 x 0.9	4 x 5/8-11 UNC	2.6	5.1	1.18	0.354	1.969	F05	4.2	5.2
2½	1.8	1.8	5.50	4 x 0.7	4 x 5/8-11 UNC	3.2	5.6	1.18	0.354	1.969	F05	5.5	6.5
3	1.8	2.5	6.00	4 x 0.7	4 x 5/8-11 UNC	3.5	5.8	1.18	0.354	1.969	F05	6.1	7.3
4	2.0	3.5	7.50	4 x 0.7	8 x 5/8-11 UNC	4.3	6.7	1.18	0.433	2.756	F07	9.0	12.5
5	2.2	4.6	8.50	4 x 0.9	8 x 3/4-10 UNC	4.8	7.4	1.18	0.551	2.756	F07	12.6	16.9
6	2.2	5.7	9.50	4 x 0.9	8 x 3/4-10 UNC	5.4	8.0	1.18	0.551	2.756	F07	15.1	20.4
8	2.4	7.8	11.75	4 x 1.0	8 x 3/4-10 UNC	6.7	9.4	1.57	0.669	4.016	F10	27.0	33.3
10	2.7	9.8	14.25	4 x 1.0	12 x 7/8-9 UNC	7.9	10.7	1.57	0.866	4.016	F10	40.8	54.5
12	3.1	11.7	17.00	4 x 1.0	12 x 7/8-9 UNC	9.3	12.0	1.57	0.866	4.016	F10	60.7	76.2
14	3.1	—	18.75	—	12 x 1-8 UNC	10.3	13.0	1.57	0.866	4.016	F10	86.9	131.5
16	4.0	—	21.25	—	16 x 1-8 UNC	11.8	14.2	2.00	1.063	5.512	F14	121.4	194.8
18	4.5	—	22.75	—	16 x 1 1/8-7 UNC	12.8	15.6	2.00	1.063	5.512	F14	154.2	235.5
20	5.0	—	25.00	—	20 x 1 1/8-7 UNC	14.2	17.3	2.52	1.063	6.496	F16	208.5	340.5
24	6.1	—	29.50	—	20 x 1 1/4-7 UNC	16.5	19.7	2.76	1.417	6.496	F16	387.9	503.0