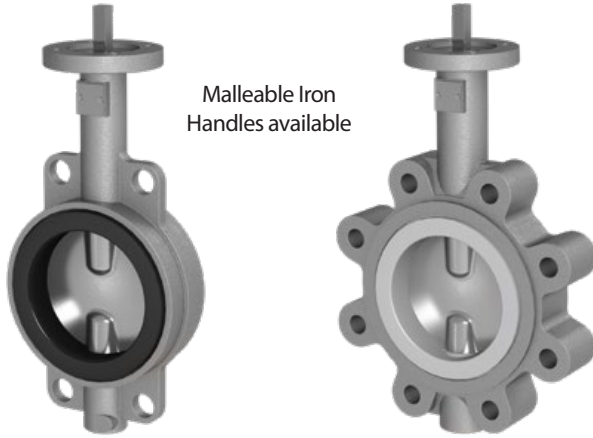




Wafer & Lug Resilient Seated Butterfly Valve



Malleable Iron
Handles available



Bill of Materials

#	Description	Materials
1	Body	ASTM A351 grade CF8M
2	Seat*	EPDM, BUNA, VITON, PTFE/EPDM
3	Upper Stem	ASTM A276 431, 316SS Option
4	Disc*	Polished CF8M, PTFE/CF8M, AL-BZ
5	Lower Stem	ASTM A276 431, 316SS Option ASTM
6	Lower Stem Retainer	304 SS
7	Stem Bushing	PTFE lined fiberglass
8	O-ring	Fluoroelastomer
9	Snap Ring	304 SS
10	Split Washer	1Cr13
11	Nameplate Tag	Stainless Stell

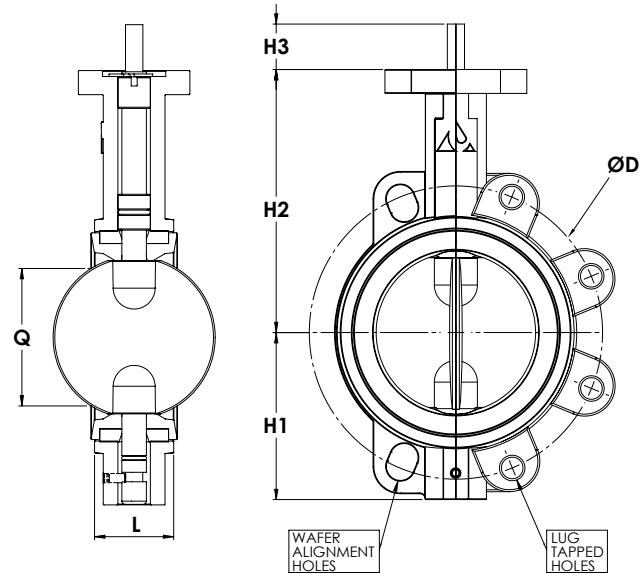
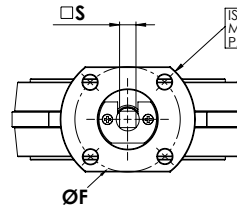
* Note: Additional Seat/Disc Options Available

Features

- 650 Wafer Stainless Steel Body sizes 2" - 24"
- 651 Lug Stainless Steel Body sizes 2" - 24"
- Lug-style dead end service capabilities through 12"
- 100 PSI bi-directional
- Install between Standard ANSI class 125/150 flanges
- ISO 5211 square drive shaft for easy automation
- Conforms to MSS-SP-67, MSS-SP-25, API-609
- Designed for blowout-proof service
- High-Cv slim disc & 2-piece stem design 2"-12"
- Field repairable
- Vacuum service capable 2" thru 12" to 10 microns
- 304 SS Handles available
- Cast Iron Gear Operators available

Approvals

- API 609
- NSF/ANSI 372
- NSF/ANSI 61 (Commercial Hot)



Dimensions

Size	L	Q	ØD	Wafer Holes	Lug Taps	H1	H2	H3	□S	ØF	ISO	Wafer Weight	Lug Weight
in	in	in	in	in	SAE Thread	in	in	in	in	in		lb	lb
2	1.69	1.1	4.74	4 x 0.9	4 x 5/8-11 UNC	2.76	5.12	1.18	0.35	1.97	F05	4.2	5.2
2½	1.81	1.8	5.49	4 x 0.7	4 x 5/8-11 UNC	2.95	5.43	1.18	0.35	1.97	F05	5.5	6.5
3	1.81	2.5	6.00	4 x 0.7	4 x 5/8-11 UNC	3.74	5.71	1.18	0.43	1.97	F05	6.1	7.3
4	2.05	3.5	7.50	4 x 0.7	8 x 5/8-11 UNC	4.17	6.46	1.18	0.43	2.76	F07	9.0	12.5
5	2.20	4.6	8.50	4 x 0.9	8 x 3/4-10 UNC	4.65	7.4	1.18	0.55	2.76	F07	12.6	16.9
6	2.20	5.7	9.51	4 x 0.9	8 x 3/4-10 UNC	5.43	7.99	1.18	0.55	2.76	F07	15.1	20.4
8	2.36	7.8	11.75	4 x 1.0	8 x 3/4-10 UNC	6.42	9.37	1.42	0.67	2.76	F07	27.0	33.3
10	2.68	9.8	14.25	4 x 1.0	12 x 7/8-9 UNC	7.95	11.18	1.42	0.87	4.02	F10	40.8	54.5
12	3.07	11.7	17.01	4 x 1.0	12 x 7/8-9 UNC	9.41	12.52	1.42	0.87	4.02	F10	60.7	76.2
14	3.07	—	18.74	—	12 x 1-8 UNC	10.31	12.99	1.42	0.87	4.02	F10	86.9	131.5
16	4.02	—	21.24	—	16 x 1-8 UNC	11.81	14.17	2.01	1.06	5.51	F14	121.4	194.8
18	4.49	—	22.76	—	16 x 1 1/8-7 UNC	12.6	16.73	2.01	1.06	5.51	F14	154.2	235.5
20	5.00	—	25.00	—	20 x 1 1/8-7 UNC	14.17	17.32	2.52	1.06	6.50	F16	208.5	340.5
24	6.06	—	29.51	—	20 x 1 1/4-7 UNC	16.54	19.69	2.8	1.42	6.50	F16	387.9	503.0